



ENDURADATA
PROTECTING, DELIVERING AND LEVERAGING DATA

EDpCloud For Tech People With No NDA

Features & Architecture Overview

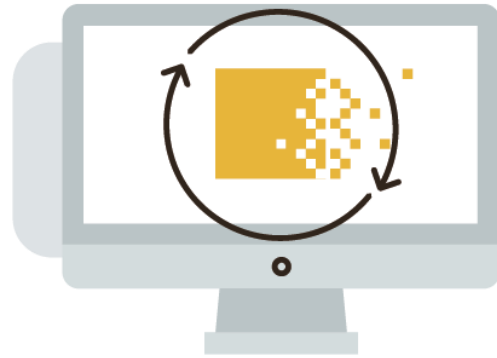
support@enduradata.com

1-952-746-4160

Enduradata Confidential



SOLUTION: EDpCloud



EnduraData EDpCloud:
Automated and encrypted data movement
between business processes, heterogeneous
systems and different geographic sites.

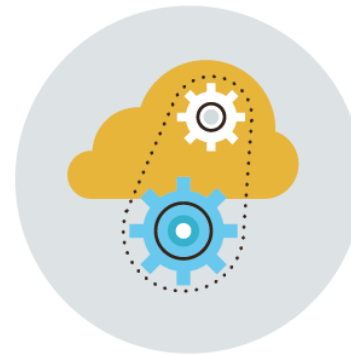
Accelerated data movement solution for:



Multiple Platform



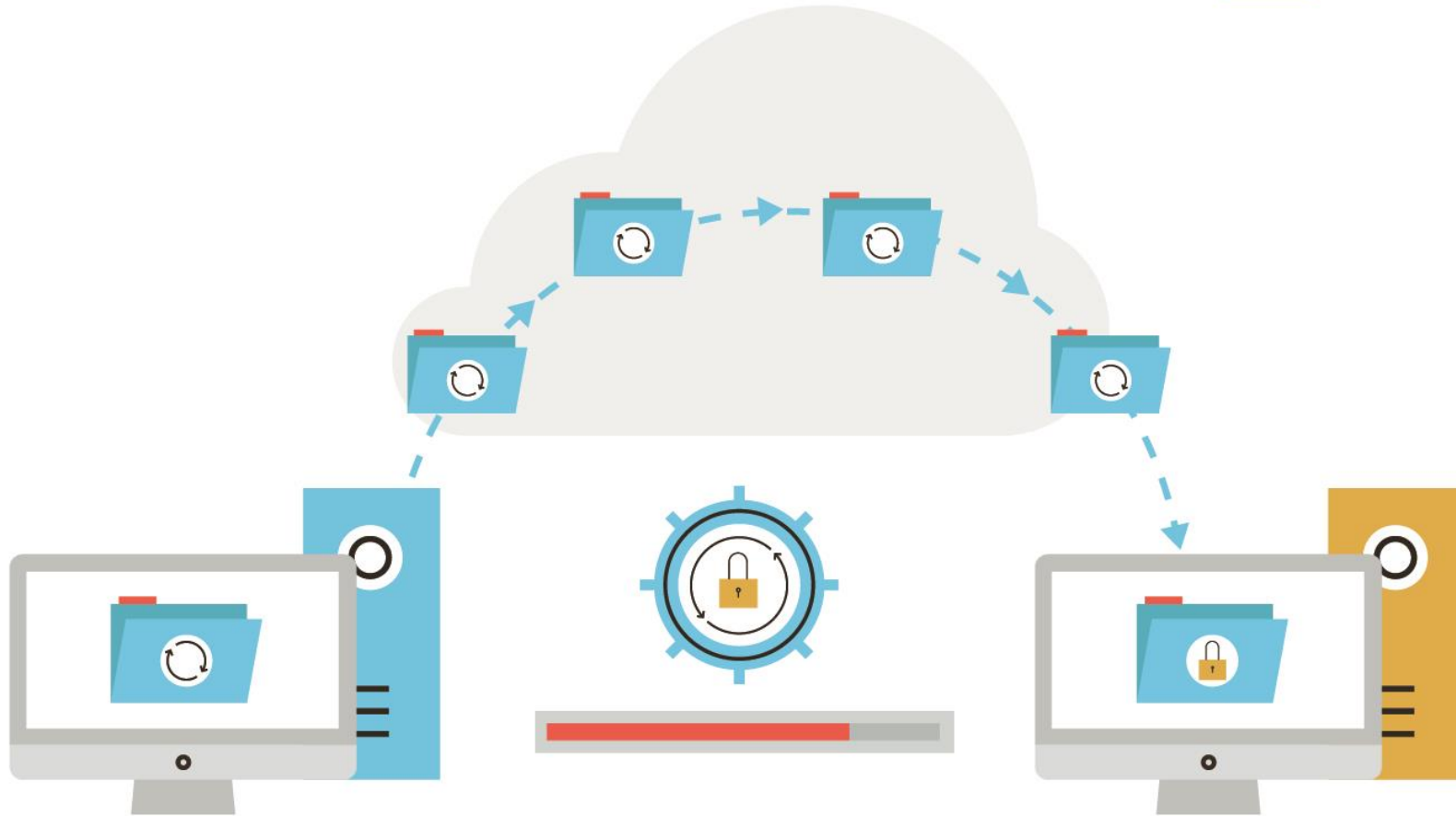
Multiple Sites



The Cloud



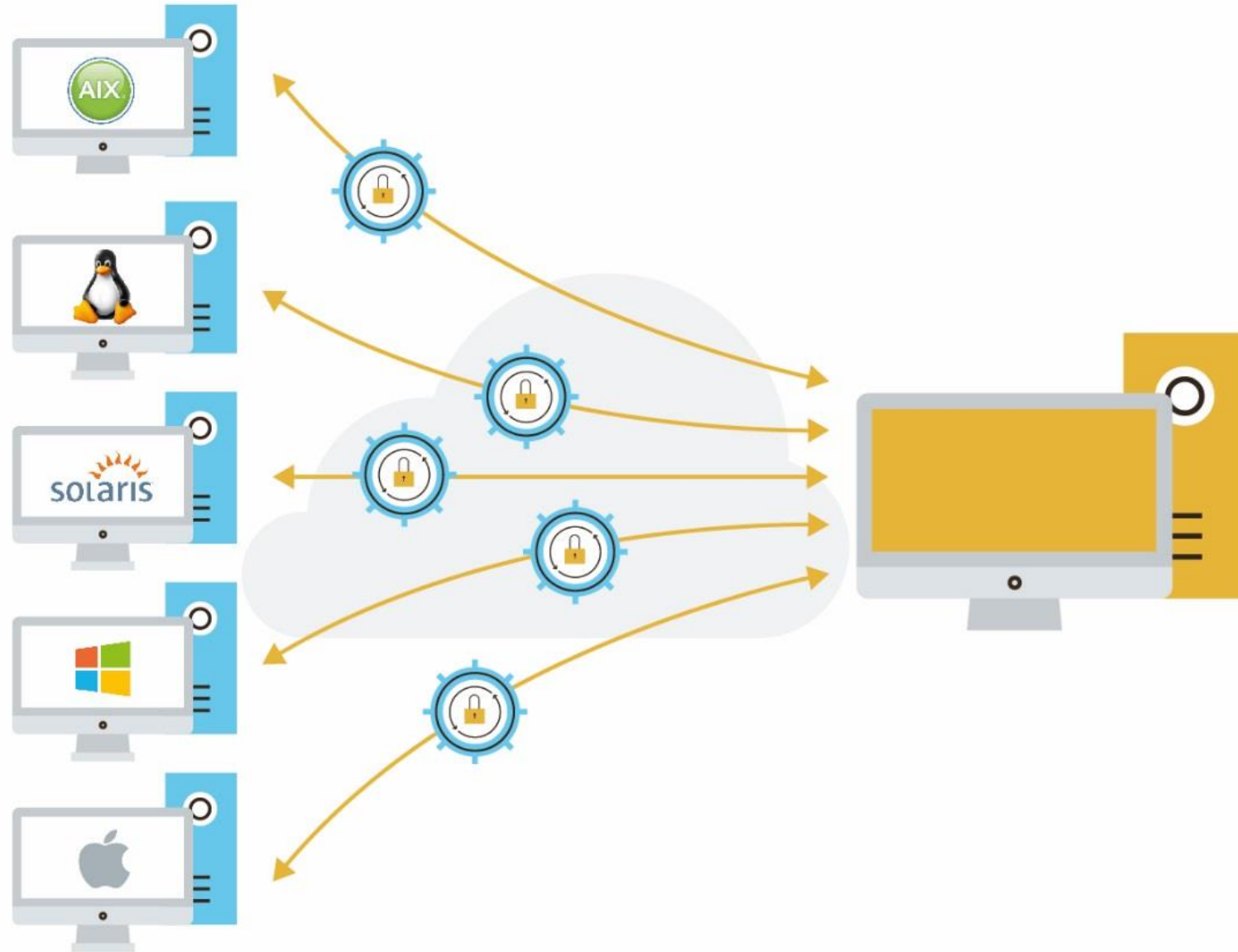
Big Data

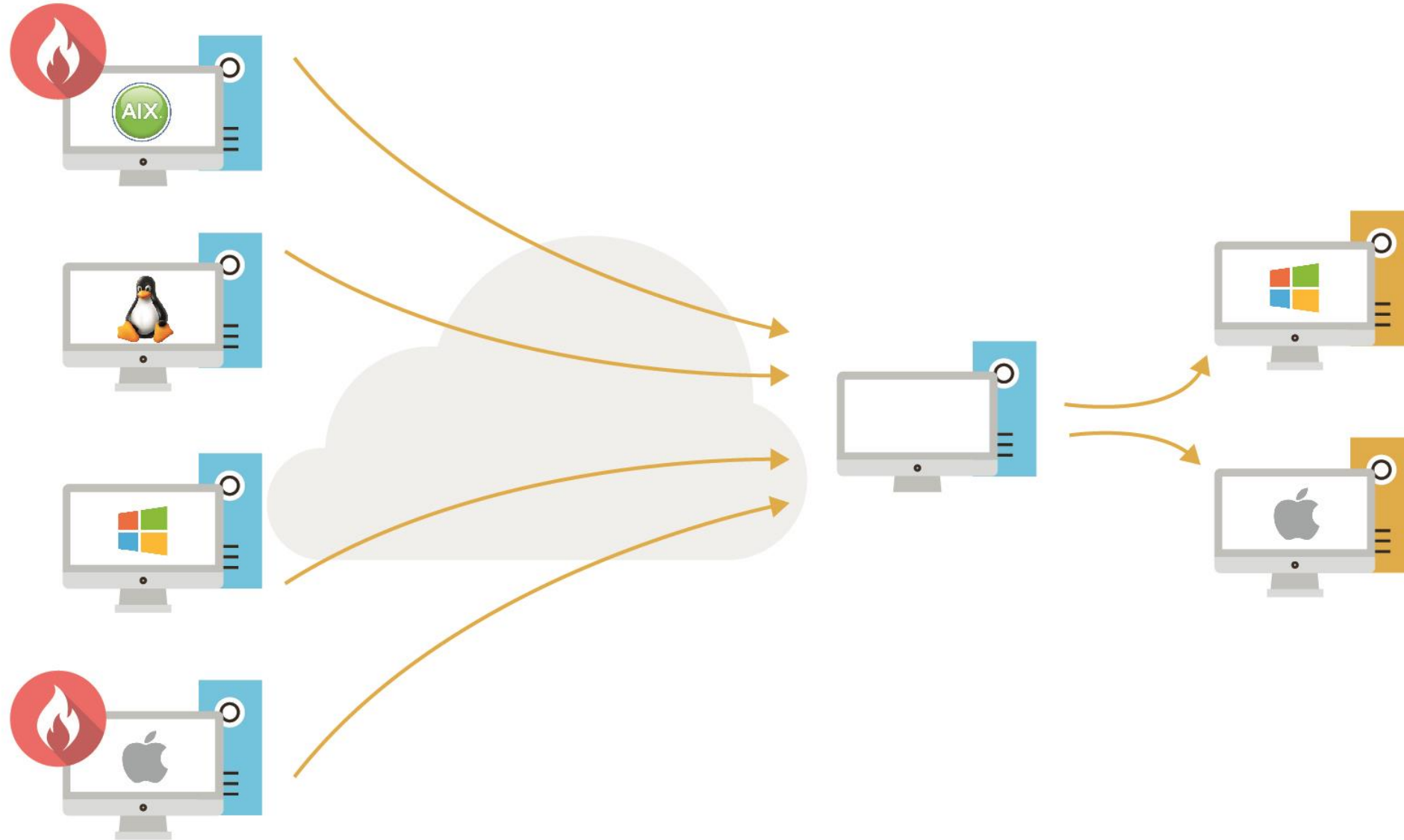






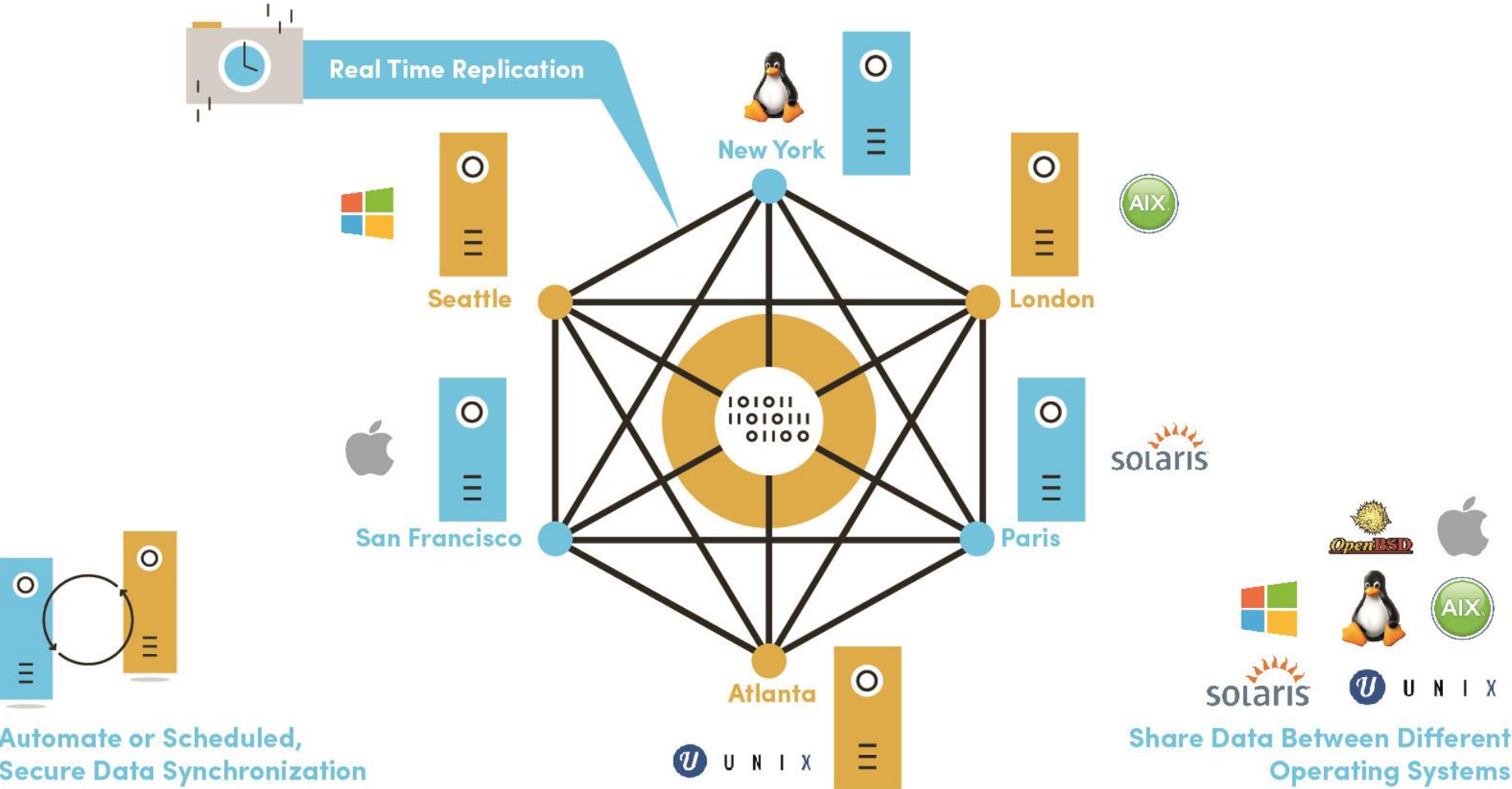




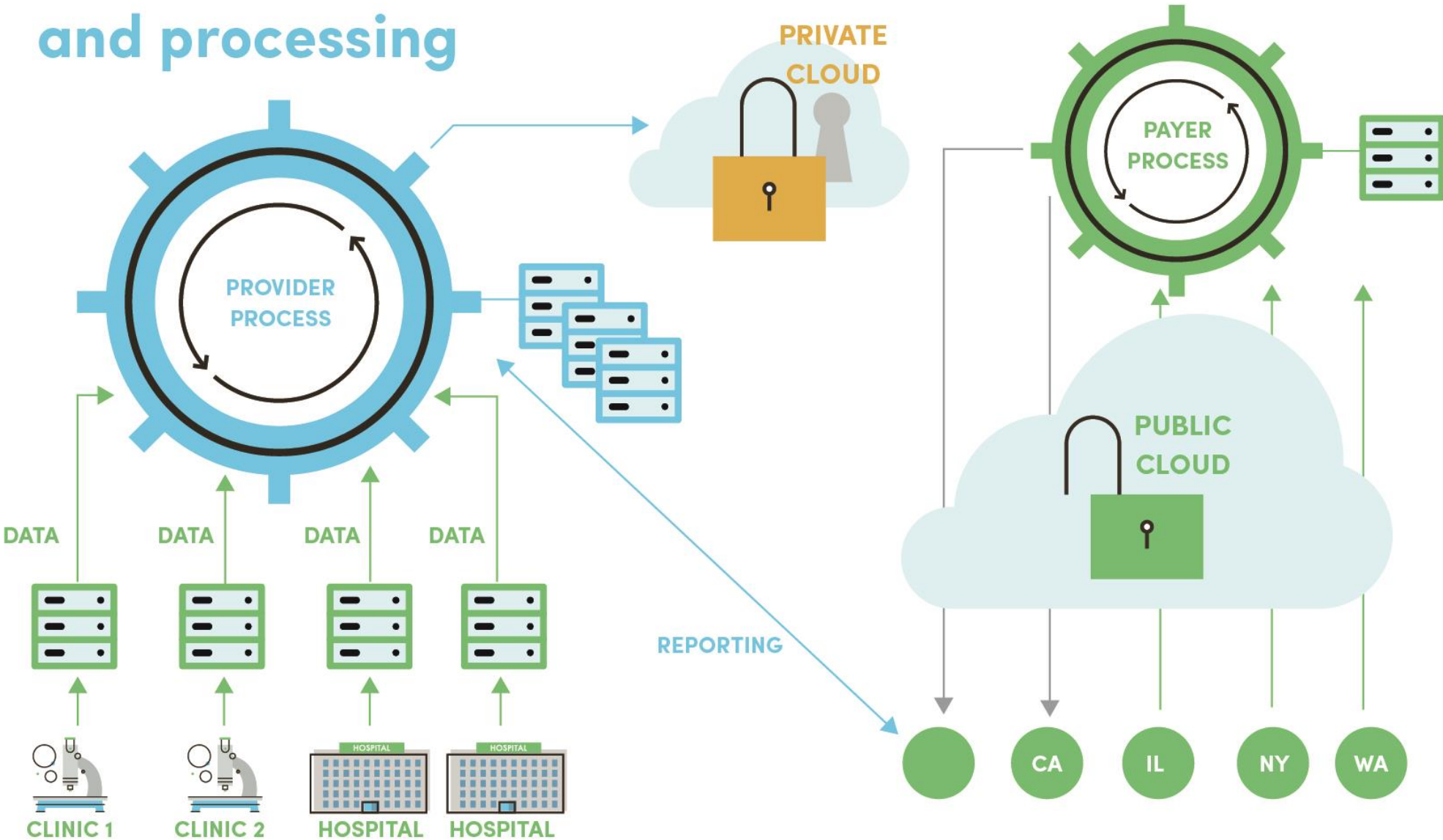


EDpCloud Suite:

Transfer data between different OS's and different locations



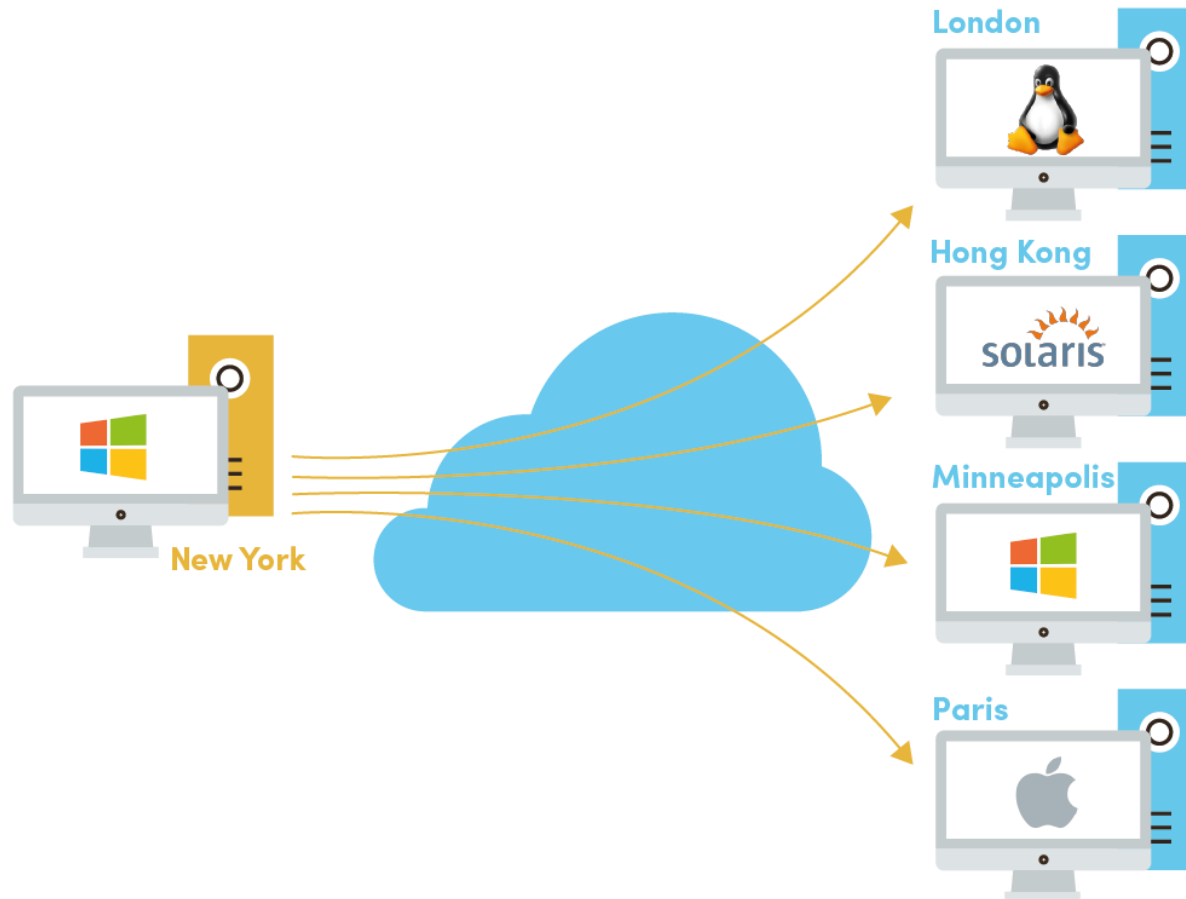
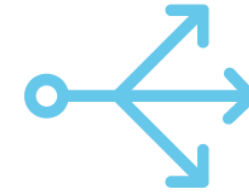
Healthcare: Automated data movement and processing











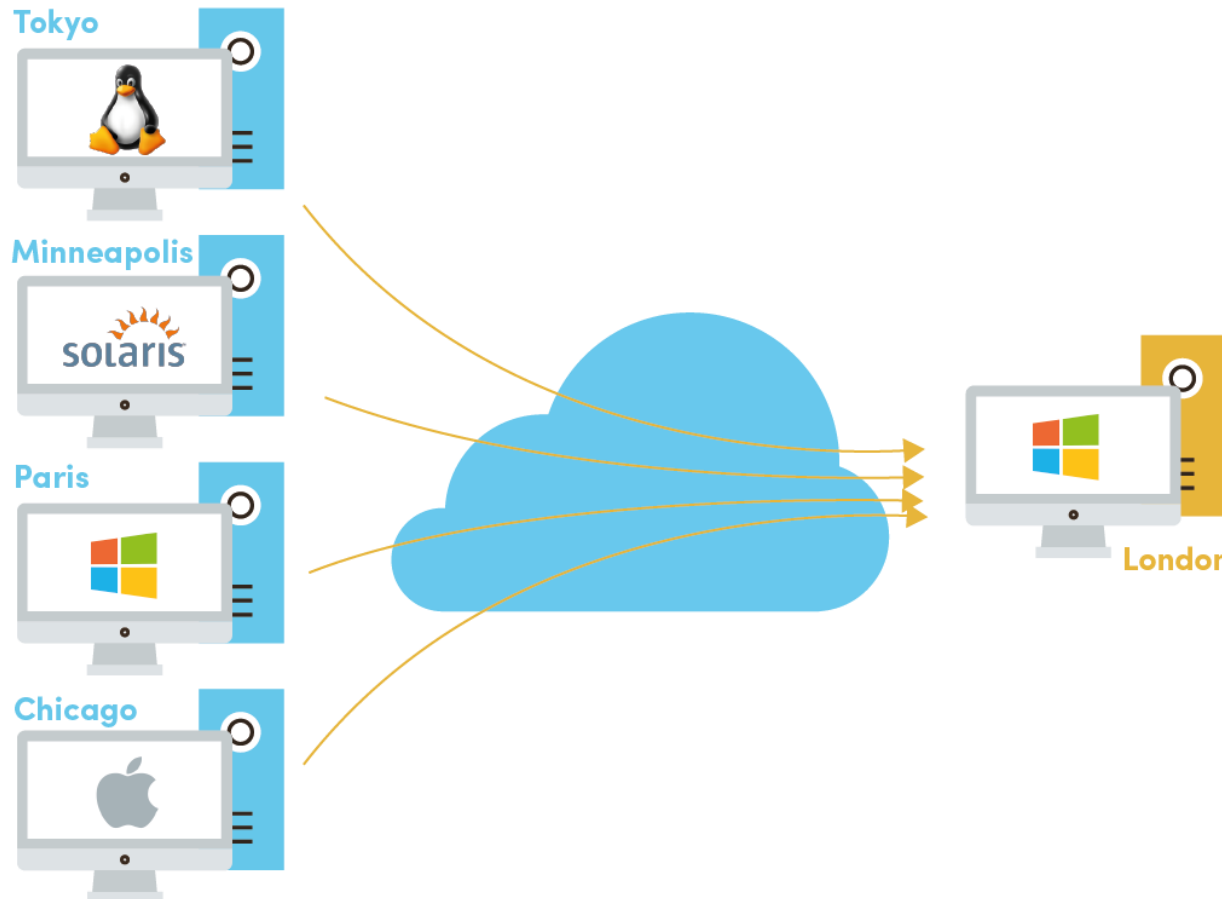
EDpCloud One To Many Replication:

Distribute data automatically anywhere



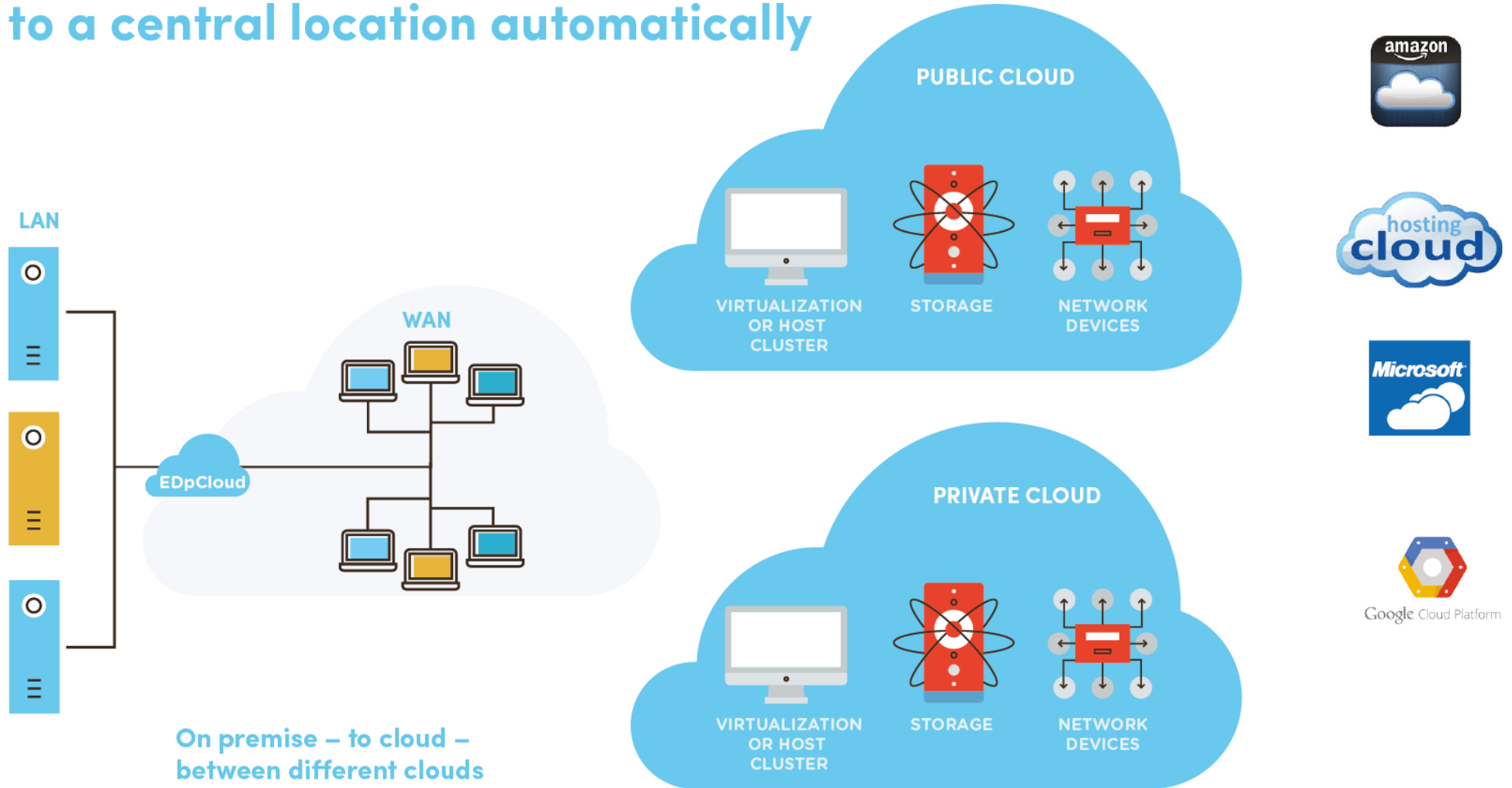
-  Cross Platform
-  VUpdates (Windows, Linux)
-  Scheduled Updates
-  Data movement/sync
-  Automate Workflow
-  Relay & Forward Data
-  Share Data
-  Open File Support

EDpCloud Many To One Replication: Bring data to a central location automatically



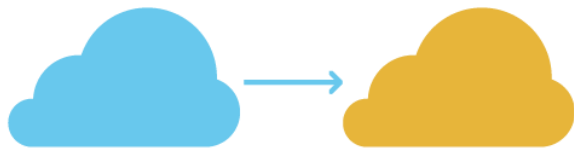
-  Backup Consolidation
-  Data Aggregation
-  Data Migration
-  Data Sharing
-  Versioning
-  Continuous Data Protection (CDP)
-  Virtual machines
-  Physical machines.

Use EDpCloud in: Private – Public – Hybrid Bring data to a central location automatically



Migration Uses

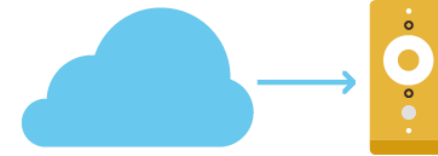
Automated Data Migration & Movement



Cloud to Cloud



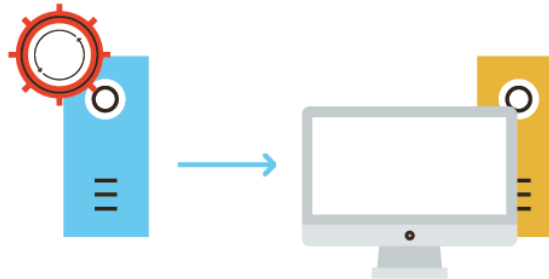
Platforms to Cloud



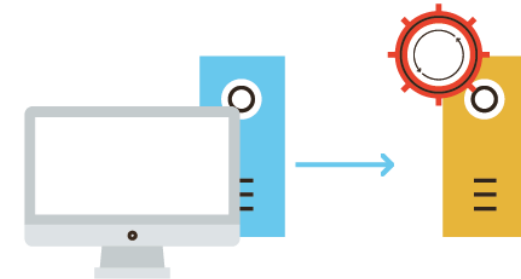
Cloud to platforms



Big Data Aggregation,
Cluster to cluster

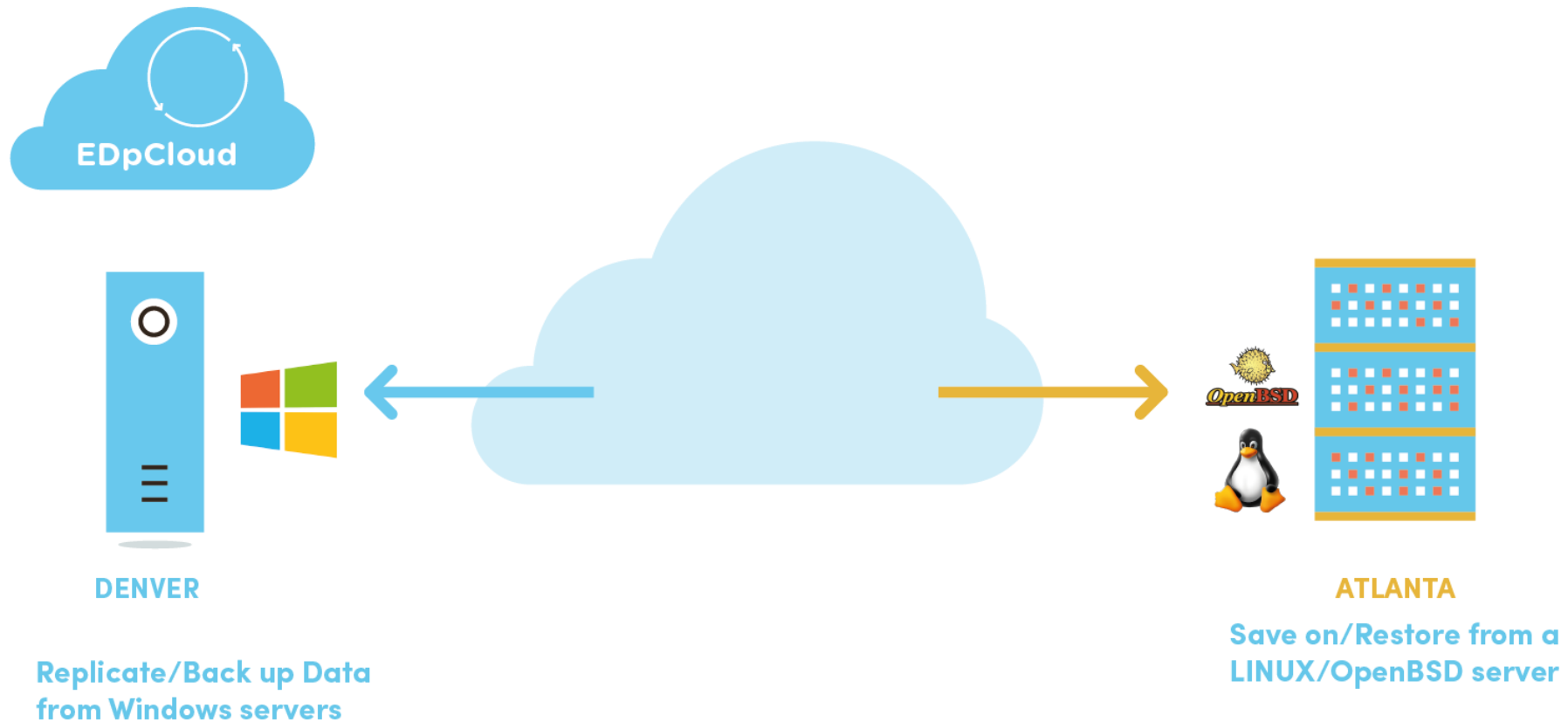


Virtual to Physical Machines



Physical to Virtual Machines

Ransomware Protection with multi OS, versioning & isolation





Security & Encryption



Data streams are encrypted
(AES 128 by default)



Data can remain encrypted at
rest if you chose to

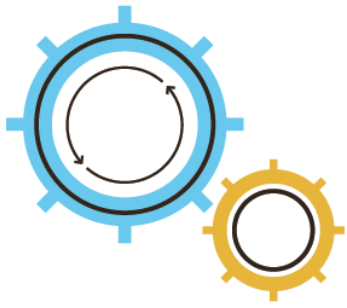


Other rules: Regex on both
sender and receiver.



Multiple authentications:

- ✓ Hosts allowed
- ✓ Passwords for management
- ✓ Passwords for transport
- ✓ File encryption keys

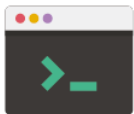


Configuration and Management

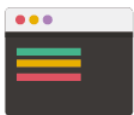


XML Configurations:

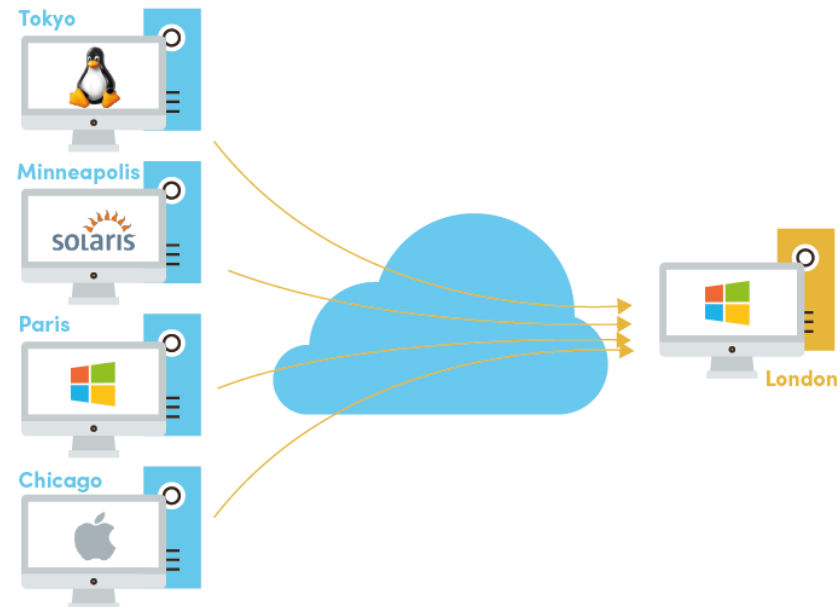
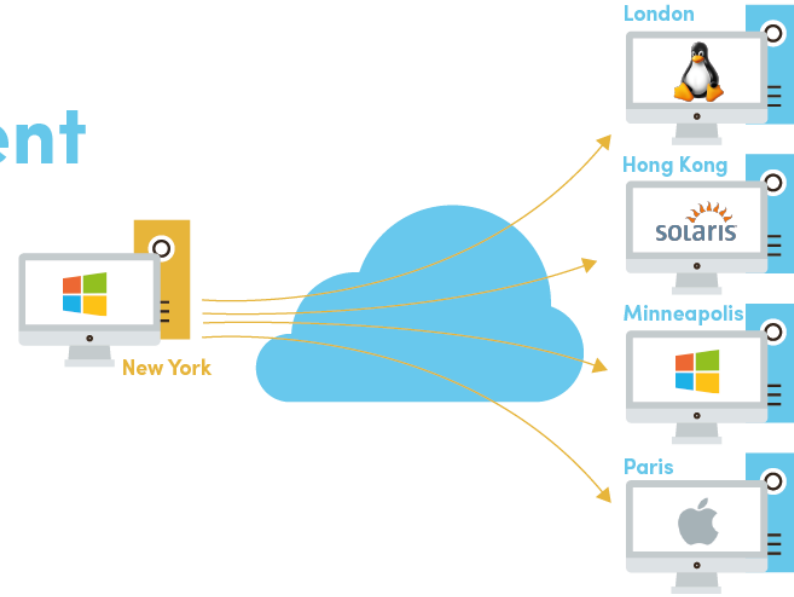
- ✓ One to One
- ✓ One to Many
- ✓ Many to One
- ✓ Many to Many
- ✓ Bidirectional:
 - ✓ / to / on Linux
 - ✓ C: to C: etc.

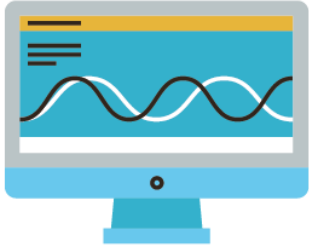


Command Line



Browser GUI.





Bandwidth & Compression

Reduce bandwidth used & sync time by sending only deltas (small blocks that changed)

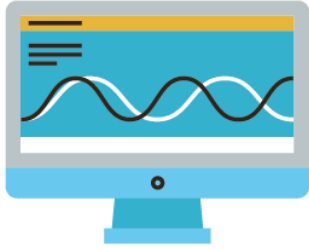


Use bandwidth throttling



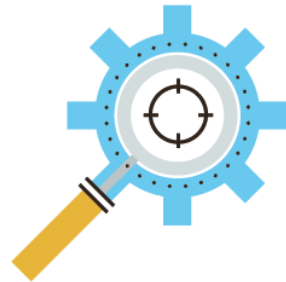
Use adaptive compression

Use Pause and Resume: Start at time T1 pause at time T2, resume at time Tn ...

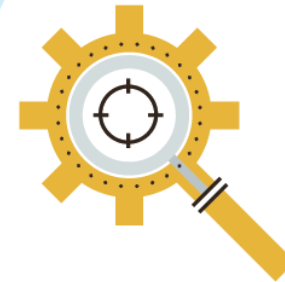


Post/Pre & Isolation

Post & pre processing hooks on sender



Post & pre processing hooks on receiver



Isolation of receiver from sender (See ransomware).

Example data ingestion (sensors, reports, etc.)



Email Alerts

- ✓ **Configure alerts to notify you on failures**
 - ✓ Network to remote down
 - ✓ Replication failures
 - ✓ Disk space issues
 - ✓ etc.

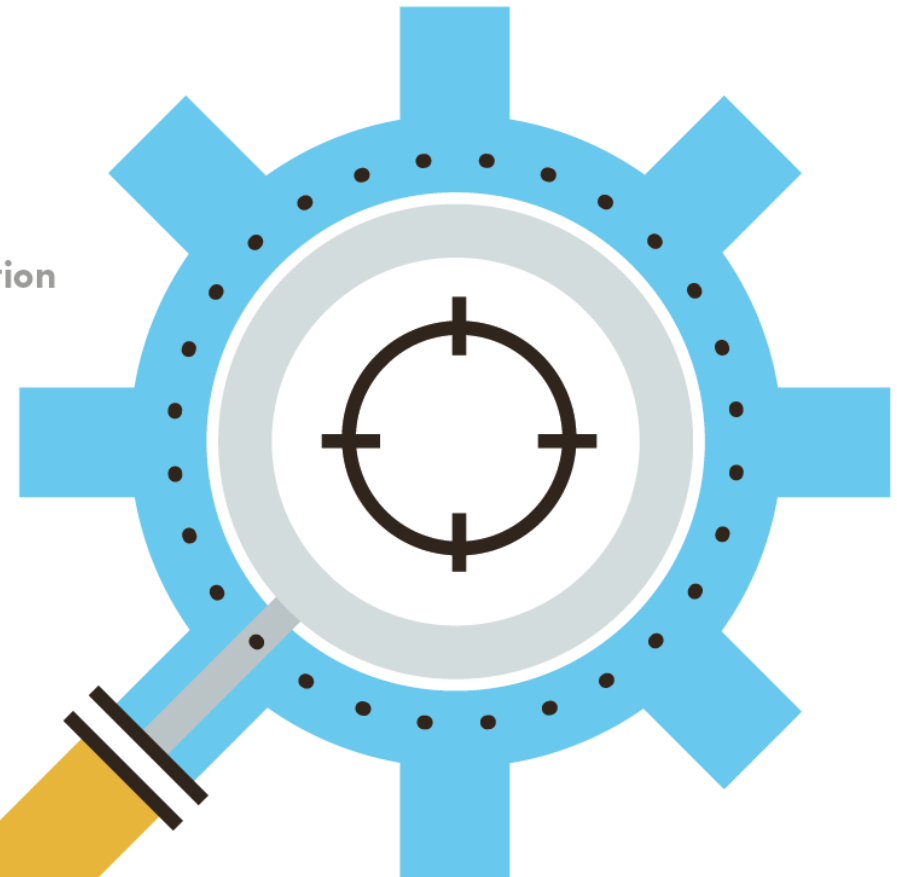


- ✓ **Receive alerts only from sender**
- ✓ **Receive alerts only from receiver**
- ✓ **Receive alerts from both.**



Learning algorithms

- ✓ **Some Machine Learning:**
 - ✓ When to use parallel Disk I/O
 - ✓ Parallel Streams for efficient bandwidth utilization
 - ✓ Learn from past performance
 - ✓ Learn from current performance
 - ✓ Self Tune, Predict ETA
 - ✓ CPU Load optimization
 - ✓ Balance I/O, CPU usage.



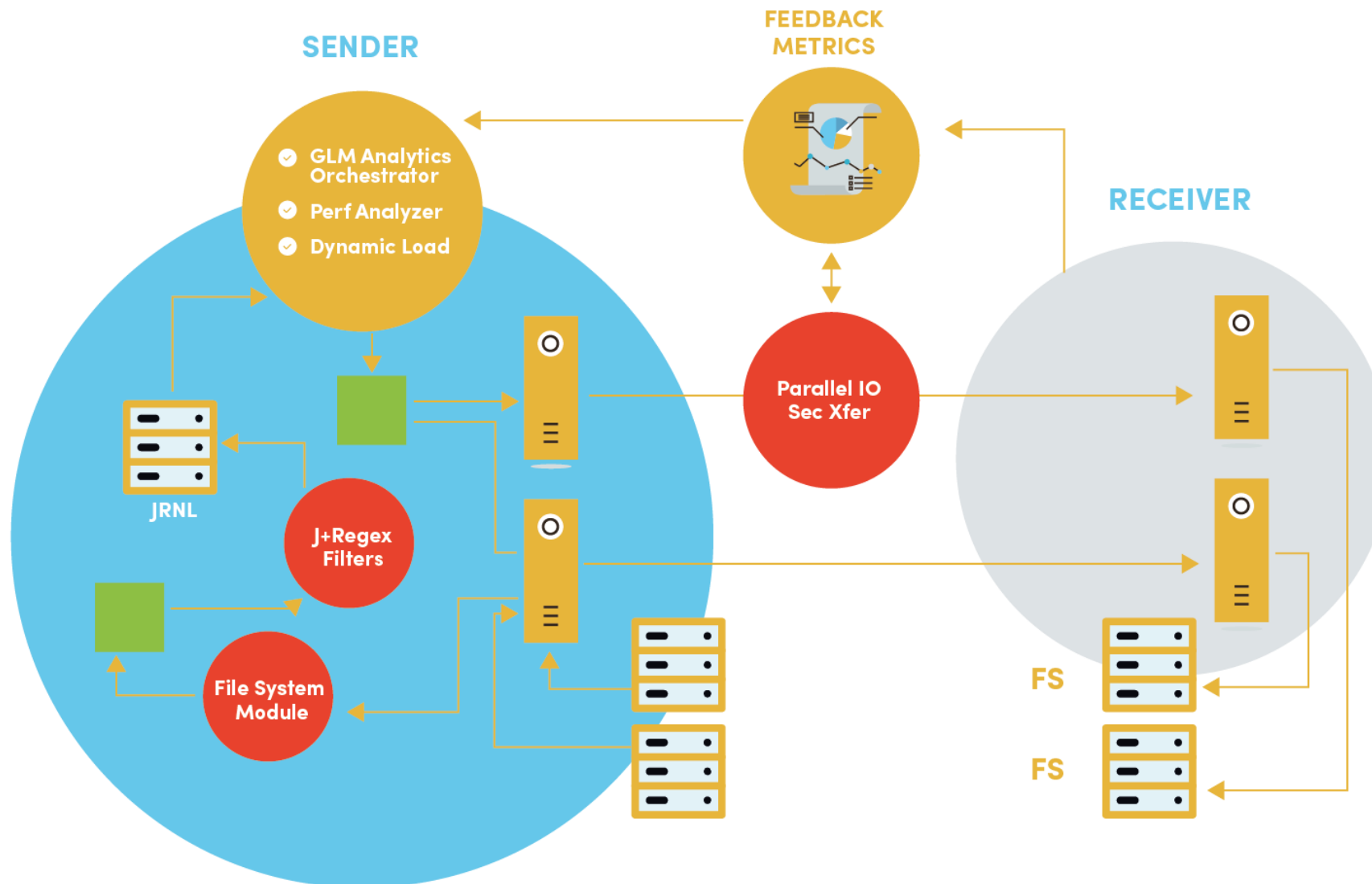


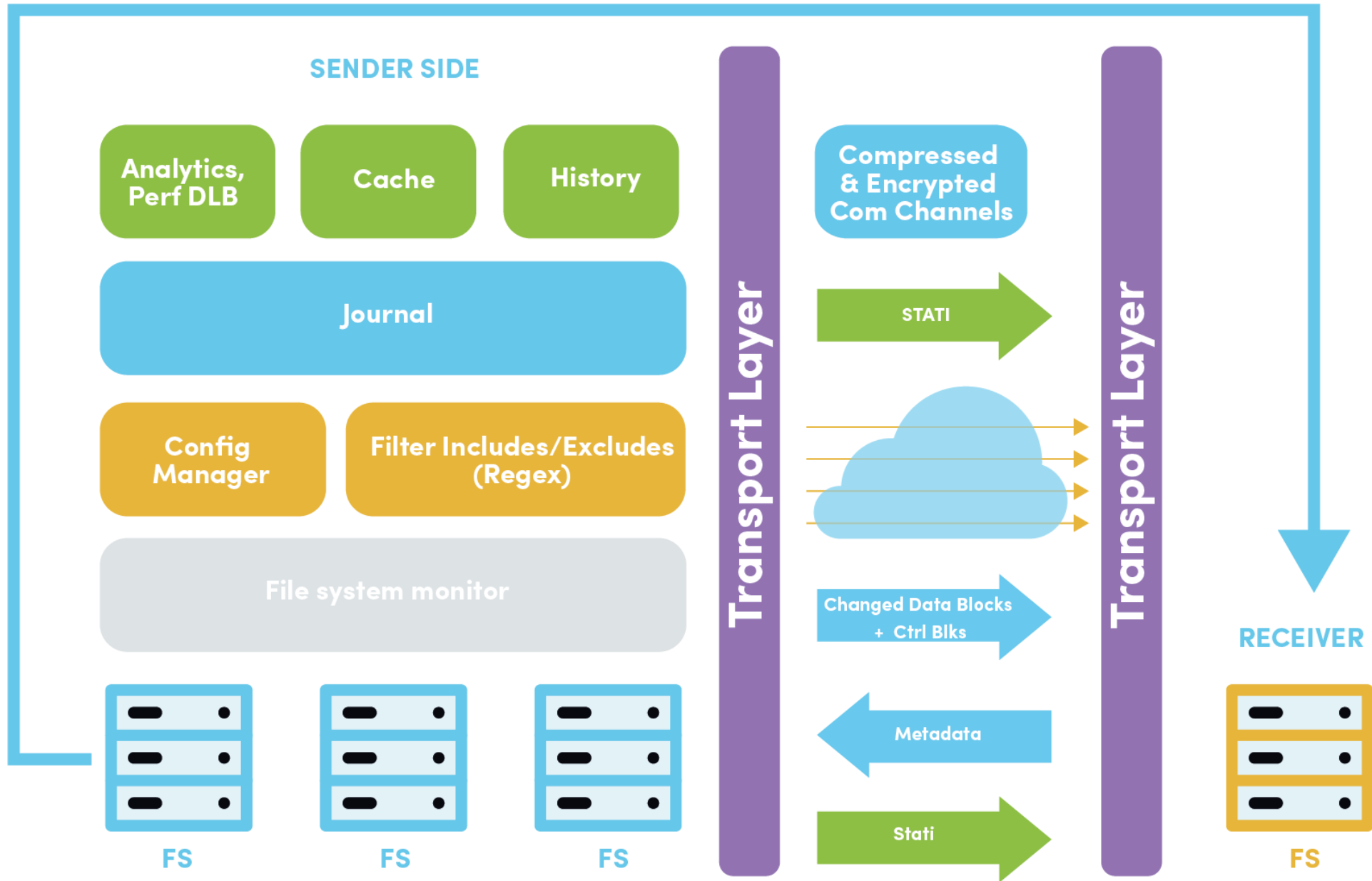
Journal File Changes: Rules & Policies

- ✓ Journal file changes for each subscriber:
 - ✓ If subscriber is interested in a file system
 - ✓ && If it matches a regex in includes
 - ✓ && If it does not match regex in exclude.
 - ✓ Then pass to transport layer

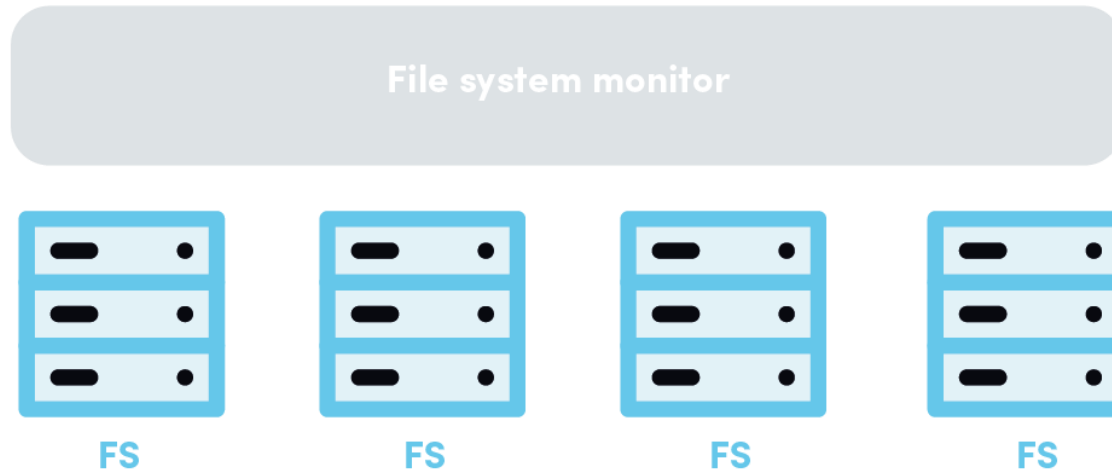


Brief Overview of the architecture

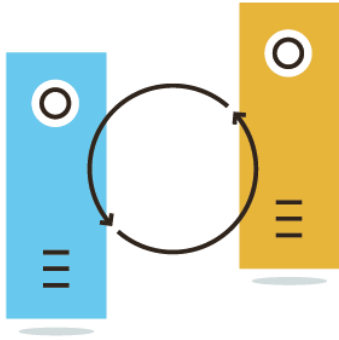




Sender side: real time module: Monitors data and metadata changes



- ✓ Monitor I/O changes:
- ✓ Mutator system calls:
 - ✓ Write
 - ✓ Truncate
 - ✓ Chmod
 - ✓ Chgrp
 - ✓ Chown
 - ✓ Rename
 - ✓ Delete
 - ✓ Symlink
 - ✓ Mkdir
 - ✓ Rmdir
 - ✓ Change attributes



Data Transfer

- ✓ Use multiple threads: 1 thread per stream or more
- ✓ Get info from journal
- ✓ Slice and dice to create well balanced payloads
- ✓ Group compressing and non compressing blocks
- ✓ Consolidate operations if needed
- ✓ Consolidate blocks if needed (dedupe)
- ✓ Adaptively compress and encrypt
- ✓ Send only what has changed (plus some delta).



ACLs and Security preservation



Windows to Windows:
acls and permissions



Windows to Linux:
Files owned by root
or specified user



Mac, Linux, Solaris:
Posix acls (setfacl, getfacl)
between same platform



TBD: Windows2unix:
Samba style sec mappings.



Mac, Linux, Solaris:
uid, gid, ... mode bits

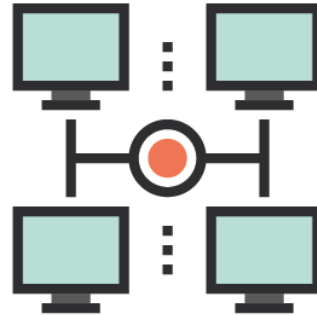


Some operations are more complex:

Rename across multiple machines

Traditional File systems: Rename is:

- Copy
- Delete



EnduraData: Rename is more efficient & faster:

- Attempt rename on remote
- Copy to remote if different or missing
- Delete.



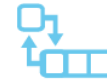
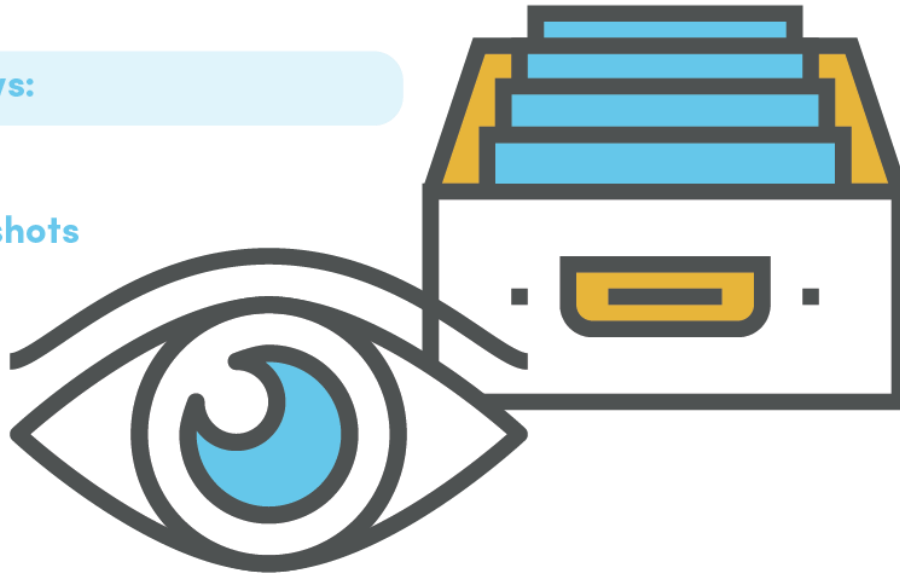
Deal with open files



Windows:

-VSS

-Snap shots



Re-queue changes.



Management

- ✓ XML configurations
- ✓ CLI or Browser management & configurations
- ✓ Scheduled
- ✓ Real Time
- ✓ Pause/Resume/Cancel
- ✓ Priority control
- ✓ Queue, put, get
- ✓ History and logs.

Requirements

- VM or Physical machine memory: 8GB
- Network: LAN, WAN, MAN or Internet
- CPU speed: min 1Ghz
- Available free storage for logs, binaries, history, libraries: 4GB
- Operating systems supported:
 - ✓ Windows XP, 2003, Win7, Win8, Win 2008, Win 10, win 2012, 2016, ...
 - ✓ Linux
 - ✓ Solaris x86
 - ✓ Solaris Sparc
 - ✓ AIX
 - ✓ OpenBSD
 - ✓ Mac/OSX
 - ✓ Other Unix

Requirements for Linux Real Time

Kernel \geq 2.4

Util-Linux \geq 2.18

Major features

- Cross platform between operating systems
- Replicates between SARC & Intel & IBM power
- Supports most operating systems
- Real-time
- Scheduled
- On demand
- Pause
- Resume
- Bandwidth throttling
- Multiple streams
- Parallel I/O.

Major features

- Replicate only file changes (deltas)
- Adaptive compression
- Encryption
- Meta data (permissions, ACLs) sync
- Aggregate data from multiple locations
- Multi-cloud support
- On-premise support
- On-premise to cloud
- Cloud to on premise
- VM to VM
- VM to Physical
- Physical to Physical
- Physical to VM.

Major features

- Bandwidth throttling and control .
- One to one
- One to many
- Many to one
- Cascaded and mesh transfers
- Post and Pre processing hooks
- Filter files with includes regular expressions
- Filter files with excludes regular expressions
- Transfer PHI and confidential information.

Major features

- Server isolation for ransomware protection
- Versions and archives
- Bidirectional
- Multi-directional
- Open file support
- File name case preservation
- Data distribution
- Data aggregation
- Data migration
- Support for renames, deletes, meta data change, data changes, etc.

Major features

- Support for a very large number of files .
- Support for very large files (Limit dictated only by the OS)
- Support for many file systems including network file systems
- Data immediately available and usable on the destination (No need for restore)
- Conflict detection
- File change and replication history
- Tools for storage management and monitoring (Find files modified files, sizes, md5, etc).

Get Started now

Cross Platform file Replication Software



Download Now



visit www.enduradata.com/download

support@enduradata.com

www.enduradata.com

1-952-746-4160